

Product data sheet

Characteristics

RUZC3M

socket RUZ - mixed contact - 10A - < 250V -
connector -for relay RXM2.., RUMC3..



Main

Range of product	Zelio Relay
Product or component type	Socket
Contact terminal arrangement	Mixed
Product compatibility	Plug-in relay RUM (3 C/O) Plug-in relay RE48A (2 C/O)
Shape of pin	Cylindrical
Device short name	RUZ
Sale per indivisible quantity	10

Complementary

[I _{th}] conventional free air thermal current	10 A
[U _e] rated operational voltage	< 250 V
Tightening torque	< 1 N.m (M3.5 screw(s))
Fixing mode	By screw mounting on panel Clip-on mounting on 35 mm symmetrical DIN rail
Marking	CE
Width	38 mm
Product weight	0.054 kg

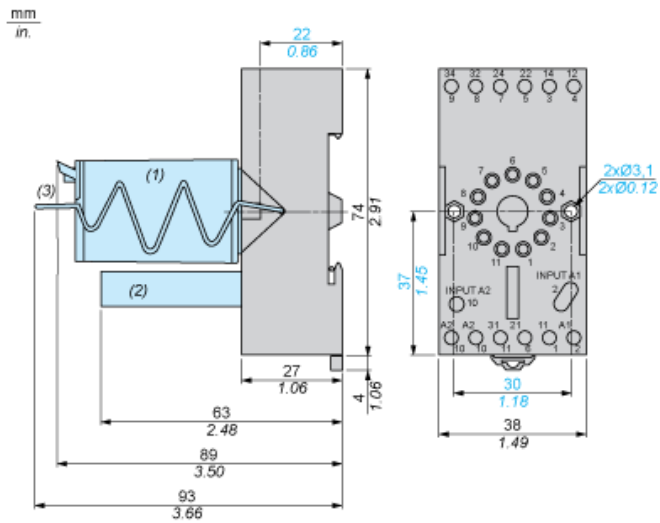
Environment

Connections - terminals	Connector, flexible cable with cable end 1 x 0.25...1 x 2.5 mm ² / AWG 22...AWG 14 Connector, flexible cable with cable end 2 x 0.25...2 x 1 mm ² / AWG 22...AWG 17 Connector, solid cable without cable end 1 x 0.5...1 x 2.5 mm ² / AWG 20...AWG 14 Connector, solid cable without cable end 2 x 0.5...2 x 1.5 mm ² / AWG 20...AWG 16
Standards	IEC 61984
Product certifications	CSA UL
Ambient air temperature for storage	-40...85 °C
Ambient air temperature for operation	-40...55 °C
IP degree of protection	IP20 conforming to EN/IEC 60529
Dielectric strength	2500 V

Contractual warranty

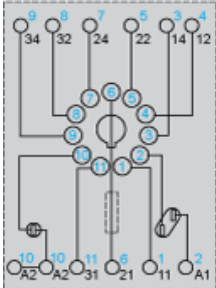
Warranty period	18 months
-----------------	-----------

Dimensions



- (1) Relays
- (2) Protection module
- (3) Maintaining clamp

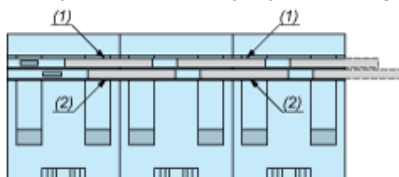
Wiring Diagram



Symbols shown in blue correspond to Nema marking.

Bus Jumpers Mounting on Sockets with Separate Contacts

Example of RUS2 bus jumper mounting on sockets (view from below)



- (1) 2 bus jumpers (polarity A2)
- (2) 2 bus jumpers (polarity A1)

RUZC3M is replaced by:



Electromechanical relay RUZSC3M

socket RUZ - separate contact - 12 A - < 250 V - connector - for relay RUMC3..

Qty 1

Reason for Substitution: End of life | Substitution date: 01 October 2008